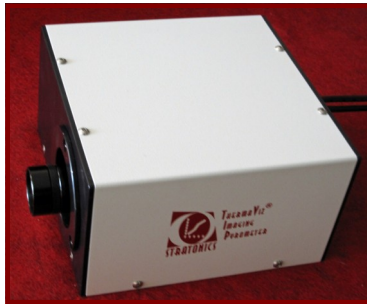




ThermaViz® The Innovative Two-wavelength Imaging Pyrometer

The integration of advanced optical diagnostics & intelligent metals processing.



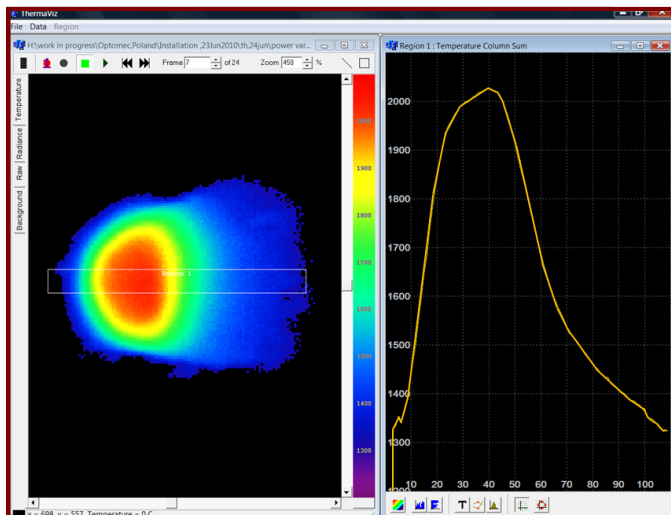
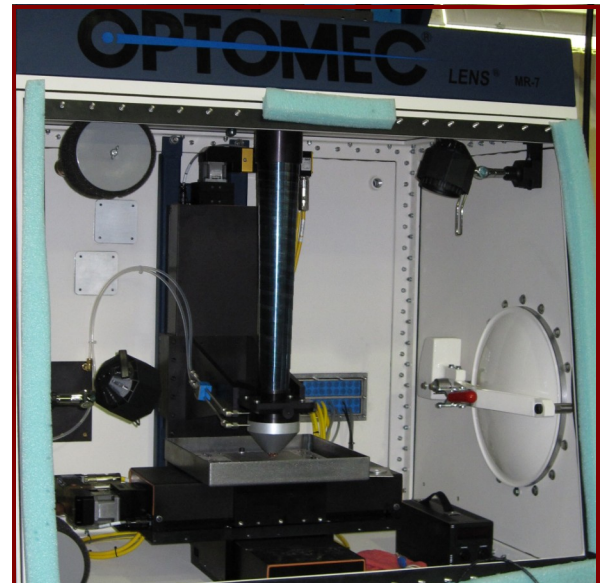
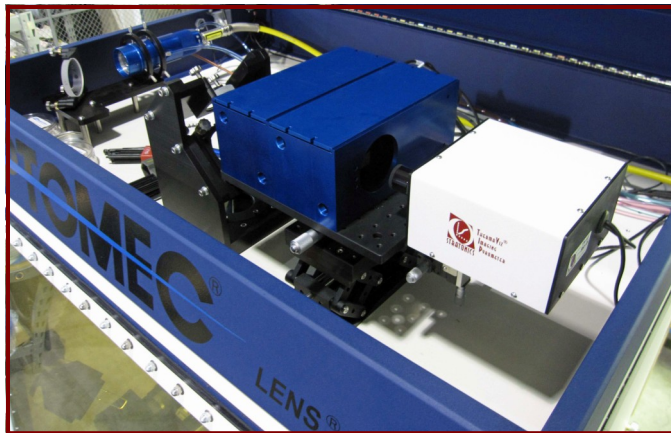
Features Summary

- ✦ Accurate, high resolution temperature maps
- ✦ 2λ technology resistant to emissivity variation
- ✦ Windows based analysis software
- ✦ Standard lamp calibration
- ✦ High Sensitivity NIR Cameras
- ✦ Real-time measurement
- ✦ Temperature Range 600 - 2500° C
- ✦ Accuracy 3 - 10° C
- ✦ Resolution 20 μm
- ✦ Dimensions 6" x 6" x 3"

LENS® now features fully integrated thermal imaging.

ThermaViz® Sensor Integrated into LENS®

- ✦ Views melt pool along laser path
- ✦ Real-time, 2-D temperature maps
- ✦ Supports modeling and simulation



ThermaViz® Temperature Movies of Melt Pool Provides Average and Statistics

- ✦ Peak temperature
- ✦ Cooling rate at solidification contour
- ✦ Heating rates
- ✦ Dimensions (length and width) to solidification contour
- ✦ Visualization of dynamics

LENS® is a registered trademark of Sandia Corporation